

**MASS INTENTIONS**

**SATURDAY**  
**5:00 PM** Margaret Gada  
 Dorothy Frigoletto (1<sup>st</sup> Anniversary)

**SUNDAY**  
**8:00 AM** Francis Harding, Sr.  
 Richard Sparks  
**9:45 AM** Dennis Raspuzzi (8<sup>th</sup> Anniversary)  
 Edward & Anne Loughran  
**11:30 AM** Shawn O'Malley  
**Baptism:** James Colt Kerselbach

**MONDAY**  
**8:00 AM** For the People of the Parish

**TUESDAY**  
**8:00 AM** Helen Grillo

**WEDNESDAY**  
**8:00 AM** Edmund Sentkowski

**THU. & FRI.** **8:00 AM** **Communion Service**

**SATURDAY**  
**5:00 PM** Leon Cormier (30<sup>th</sup> Anniversary)  
 Jeanne Leblanc

**SUNDAY**  
**8:00 AM** Lawrence Whelan  
**9:45 AM** Deceased members of the Dooley family  
**11:30 AM** Mildred Farquhar (Birthday Remembrance)  
 Ray Biron (15<sup>th</sup> Anniversary)

**COFFEE SHOP** will be open after the 8 AM and 9:45 AM Masses. Join us for coffee, donuts and friendship.

**LITURGY OF THE WORD FOR CHILDREN** will be celebrated during the 9:45 AM Mass this Sunday. These liturgies are for children five years of age and older.

**PARISH OFFICE HOURS** for the week will be Monday through Friday from 9 AM to 3 PM.

**BABYSITTING DURING THE 9:45 AM MASS** is provided in the Church Hall for infant or pre-school children. We have both teenage and adult helpers to supervise. No registration necessary.

**THE ROSARY** is prayed each morning at 7:30 AM before Mass.

**PARISH SUPPORT**

|   |                    |
|---|--------------------|
| 223 Sunday Envelopes @                  | \$3,961.00         |
| 4 Paid Ahead Envelopes @                | 60.00              |
| 45 Make Up Envelopes @                  | 1,286.00           |
| Loose Cash@                             | 1,606.00           |
| <b>SUNDAY COLLECTION</b>                | <b>\$6,913.00</b>  |
| <b>WEEKLY PARISH OVERHEAD (9673.00)</b> |                    |
| <b>DEFICIT</b>                          | <b>(2,760.00)</b>  |
| <b>NOVEMBER PARISH PAY</b>              | <b>\$7,932.00</b>  |
| <b>DEFICIT YEAR-TO-DATE</b>             | <b>(12,893.50)</b> |

|                   |          |
|-------------------|----------|
| Maintenance       | \$230.00 |
| Fuel              | \$265.00 |
| Human Development | \$38.00  |

**THANK YOU FOR YOUR SUPPORT**



Good stewards believe that God, who has begun this good work in them, will carry it through to completion. In words and deeds, they can sing with the Psalmist, "The Lord has done great things for us; we are filled with joy!"

**PARISH TITHE:** Thanks to your generosity \$500 will be used to purchase holiday food baskets for Ginny's Food Pantry in Leominster.

**Mary, Mother of God, Pray for us.**

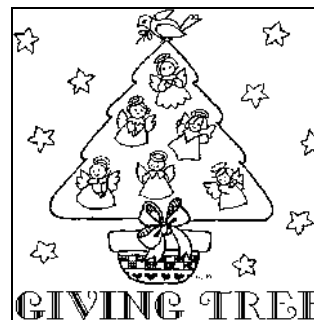
The burning candle in front of our Blessed Mother's statue is invoking her intercession for peace throughout the world and for protection of our loved ones serving in the military.

**The Feast of the Immaculate Conception:** This Tuesday, December 8<sup>th</sup>, is the Feast of the Immaculate Conception, our national feast, and is a holy day of obligation. Masses are Tuesday morning at 8 AM and Tuesday evening at 7 PM.

**RETIREMENT FUND FOR THE RELIGIOUS**

**Retirement Fund Helps Senior Religious:** As expenses continue to increase and economic difficulties tighten our income, we appreciate the help of the Retirement Fund. Your tax-deductible donation supports the care of elderly and frail religious and helps to provide such basic necessities as prescription drugs and medical services. Please give generously to next week's second collection for the Retirement Fund for the Religious. Thank you.

**Sound System Update:** As mentioned at Masses last weekend, we have launched a drive to purchase a new sound system to replace our current system, which is on "borrowed time" and is not able to support our current sound needs. To date, we have raised \$6,800 toward our goal of \$15,000. Having reached the 40% needed for a down payment, we hope to have the system installed before Christmas. Donations may be mailed to the parish office or placed in the collection basket. Checks can be made to Our Lady of the Lake with the notation "sound system". Donations made in memory of a loved one, will be remembered on our Memorial Board in the gathering area of the Parish Family Center.



**The Giving Tree**

As has been our tradition, The Giving Tree is in the sanctuary, loaded with "gift tag" ornaments. We are servicing several agencies of people in need. Everyone has a wish list. This year we have many tags with "wish items" printed on them. If you or your family can reach out to purchase one of these gifts, your generosity will be greatly appreciated. In order to ensure the gifts get to the families on time, the gifts need to be returned **UNWRAPPED (with the ornament tag attached)** on or before **December 12<sup>th</sup> and 13<sup>th</sup>**. Thank you!



**THE SACRAMENT OF CONFIRMATION:** We welcome Bishop Daniel Reilly as we celebrate the Sacrament of Confirmation with thirty three young adults at an 11 AM Liturgy on Saturday. Please continue to pray for our confirmandi, that the power of the Holy Spirit will be reflected in each of their lives.



**JOIN US!! – in Celebrating “JESUS IS THE REASON FOR THE SEASON”.** Our 1<sup>st</sup> through 5<sup>th</sup> grade students will present *their* beautiful dramatization of the Christmas story during class times (4:15 – 5:15 PM) on Monday and Tuesday, December 14<sup>th</sup> and 15<sup>th</sup>, capped by a birthday party celebration in the church hall.

After dropping children off at 4:15 PM, parents and friends are invited to find a seat in the church to await the performance. We are still looking for donations of cake frosting or decorations which can be left on the table at the entrance to the Parish Family Center at any time, and especially unfrosted cupcakes which can be dropped off on Sunday, Dec. 13<sup>th</sup> or before classes on Dec. 14<sup>th</sup>.

**YOUTH MINISTRY** is looking for adults who have a love of teens and who would like to be a part of a youth ministry adult planning team. Please call the Religious Ed. Office if you are interested.

**RELIGIOUS ED. COMMISSION** would like to welcome a few new members. The Commission members serve as a support for the Religious Ed. Program, offering feedback and ideas, and helping with events. If you would like more information, please call the Religious Ed. office.

**ADULT VOLUNTEERS NEEDED:** We are still in need of a few adults to help with Child Care from November to May during the 9:45 AM Mass each Sunday. Volunteers typically serve once a month. Please call Lisa at (978) 345-7469 if you are interested.

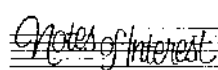


**BEAUTIFUL POINSETTIAS FOR SALE:** This weekend, Dec. 5 & 6 after each Mass. Prices are \$6, \$9, and \$15 for Poinsettias, and \$10 for Cyclamens....Great gift ideas...Please help support our Youth Group.

**Ensuring the well-being of our children is a priority** for us as a parish community. In order to understand our diocesan standards of safety with children and young people, we ask that you take an opportunity to read the CODE OF MINISTERIAL CONDUCT and the United States Bishops’ CHARTER FOR THE PROTECTION OF CHILDREN AND YOUNG PEOPLE that are available on the tables at each entrance to the church. If you or someone you know has been a victim of abuse and are in need of support, please contact Frances Nugent, Victim Services Coordinator, Office for Healing & Prevention at (508) 929-4363 (direct line). A 24-hour a day Confidential voice mail is available.

| EVENTS OF THE WEEK |   |
|--------------------|---|
| <b>SATURDAY:</b>   | Poinsettia Sale after Mass  |
| <b>SUNDAY:</b>     | 8:15 AM Peer Retreat Team<br>8:30 Beginnings<br>9:40 Kindergarten<br>** Poinsettia Sale after all Masses<br>12-4 PM Cut your own Tree at Lattanzi’s<br>6-9 PM HS I Living Nativity Trip |
| <b>MONDAY:</b>     | 4:15 – 5:15 PM Gr. 1-5 Pageant Practice<br>6:45 – 8 PM Rel. Education Gr. 6-8   |
| <b>TUESDAY:</b>    | <b>Holy Day Mass 8 AM &amp; 7 PM</b><br>4:15 – 5:15 PM Gr. 1-5 Pageant Practice<br>7:30 PM RCIA (following Holy Day Mass)   |
| <b>WEDNESDAY:</b>  | 9:30 AM La Leche<br>6:30 PM Leominster Cub Scouts<br>7 PM 12 Steps<br>7 PM Compassionate Companions<br>7 PM Mother’s of Multiples   |
| <b>THURSDAY:</b>   | 1 PM Prayer Shawl Ministry<br>7 PM Boy Scouts<br>7 PM Overeaters Anonymous<br>7 PM Social Singles   |
| <b>FRIDAY:</b>     | 7 PM Choir<br>7:30 PM Al Anon   |

Our **ANNUAL CHRISTMAS LETTER** will be mailed out in early December to every registered family. We have recently updated our parish registration database and ask for your help. If you do not receive this mailing, please call the Parish Office so that we may update our records and ensure that you receive future mailings.



**Mark Your Calendars!  
Christmas Concert–January 3<sup>rd</sup>:**

We have been incredibly blessed by God with wonderful liturgical music at Our Lady of the Lake. On Sunday afternoon, January 3<sup>rd</sup>, the Feast of the Epiphany, at 2 PM, we will have a Christmas Concert with music provided by our five music groups. This is a wonderful opportunity for us to gather together as a Parish Family to celebrate the Christmas Season. A free will offering will be taken with proceeds to benefit a fund for a new sound system. Please join us!

**Montachusett Interfaith Hospitality Network:** The week of December 27<sup>th</sup> will be Our Lady of the Lake’s turn to once again minister at the MIHN shelter. This local homeless shelter allows families to remain united while they endeavor to get back on track. We provide meals and staffing every eleventh week in cooperation with several other area churches. If you are currently a volunteer, please respond to the information you will be receiving from Heidi Champagne and Joyce Leger. If you would like to volunteer or would like more information on this ministry, please contact Heidi at 978-582-9910. If you would like to provide a dinner, please contact Joyce at 978-342-2905.



**CUT YOUR OWN CHRISTMAS TREE:** Sunday, December 6<sup>th</sup> from noon to 4 PM at the Lattanzi Family Field, 724 Lancaster Street, Lunenburg. Donations accepted to help fill the Our Lady of the Lake Food Pantry. Bring your rope, bring your saw, bring your family and cut your own field grown tree!